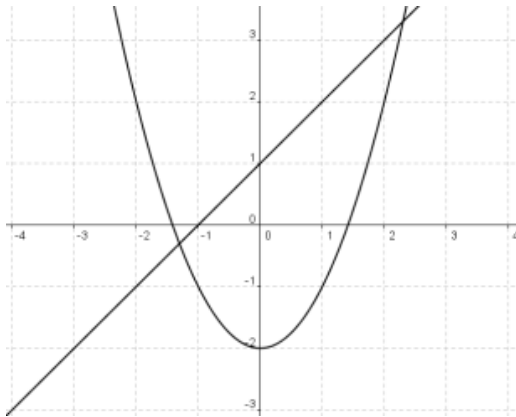


Practice for Section 1.4

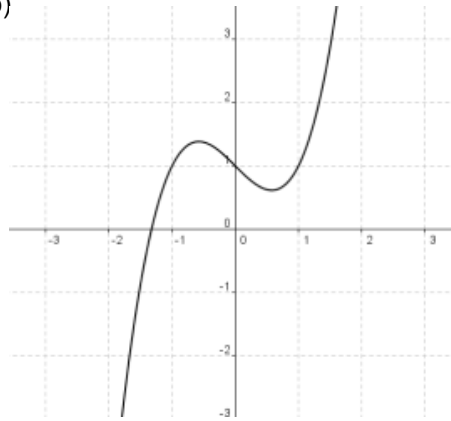
The following problems will help you practice the material you learned today. Once done, you can work on your WeBWork homework. Once you are finished, you can check your solutions.

1. Determine whether the following relations are functions or not.

a)



b)



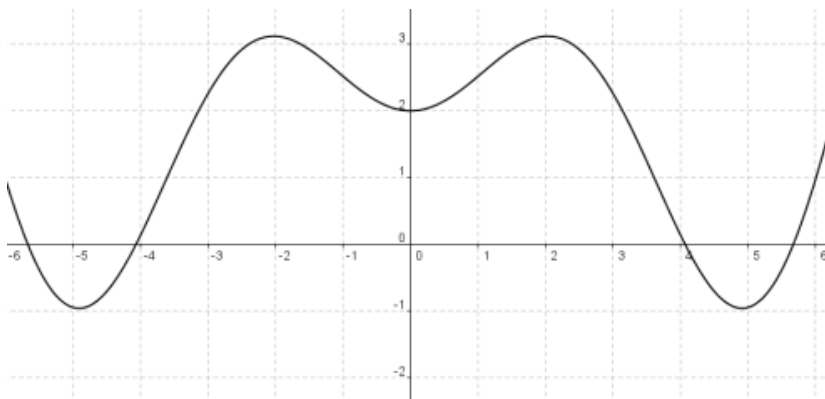
- c) $y=3x-2$. Is y a function of x ?
- d) $x^2+y^2=9$. Is y a function of x ?
- e) (student number, student grade)
- f) (student height, student grade)

2. For each of the following functions determine:

- x and y intercepts
- symmetries
- $f(-2)$
- $f(3)$
- c , if $f(c) = -1$

a) $f(x)=x^2-2$

b)



c)
$$\begin{cases} x-2, & x < 1 \\ 3-x^2, & x \geq 1 \end{cases}$$